

Carestream

Digital Mammography Solutions
from Carestream Health



NOW
available
DIRECTVIEW CR
Mammography feature
in the USA!

DIGITAL MAMMOGRAPHY WITH CARESTREAM HEALTH



Carestream Health can help with expert advice and solutions based on our intimate knowledge of mammography imaging and workflow. These solutions can transform your department or clinic in ways which improve productivity. They can also help you make a more confident diagnosis.

CAPTURE

KODAK DirectView CR Mammography Feature

High-resolution imaging for screening and diagnostic mammography

KODAK DirectView CR 850, 950, 975, Classic and Elite Systems are upgradable to mammography with the addition of the CR Mammography Feature option.

Ideal for hospitals and clinics, this optional feature enables these KODAK CR Systems to deliver quality and performance in dedicated mammography and mixed mammography/general radiography departments. Easily upgrade most existing DirectView CR units currently in general radiography applications to achieve mammography imaging. Choose a single-cassette CR for distributed processing applications, or batch-load up to eight cassettes using the CR 950/975.

Key Features:

- Simple upgrade from many KODAK DirectView CR Systems
- 48.5-micron pixel pitch high-resolution scanning
- High-DQE screens
- KODAK DirectView EVP Plus Software
- Image capture close to chest wall with special mammography cassettes
- Efficient administrative reporting with digital x-ray dashboard

KODAK DirectView CR Mammography Total Quality Tool

Streamline your CR mammography image testing

Avoid potential problems before they occur. The KODAK DirectView CR Mammography Total Quality Tool lets you perform objective tests efficiently and accurately with the same CR system interface used for examinations. Tests are done at your convenience – without the cost, scheduling, or disruption of third party testing.

Key Features:

- A test phantom kit designed for testing 18 x 24 cm and 24 x 30 cm cassettes
- A user guide that explains the simple testing exposures and procedures
- Analysis and reporting software that tracks measurements which may predict the most common failure modes
- Image test data (for current, as well as previous testing sessions) can easily be exported to a MICROSOFT EXCEL file for review and analysis, or for use with reports and other documents

Commercial distribution of the KODAK DirectView CR Mammography Feature and related accessories pending FDA approval of final labeling.



NOW available
DIRECTVIEW CR
Mammography feature
in the USA!

MANAGE

Carestream Radiology Information System (RIS)

Comprehensive Mammography Workflow

A full-featured mammography solution in the CARESTREAM RIS System enables accurate documentation and reporting of all clinical findings. This graphically enabled set of clinical tools captures patient medical and mammography radiology histories, mammography findings, follow-up and patient tracking, pathology results, and an automated radiologist report. A detailed capture screen for patient concerns and procedure information includes a drawing tool that allows technologists to convey visual information to the radiologist.

Customized patient letters based primarily on the BIRAD® levels selected can be automatically generated. Letters to referring physicians and patient appointment reminders can also be generated and tracked. Available reports include MQSA audit data, initial diagnosis statistics, patient follow-up, and patient statistics.

Key Features:

- Accurate documentation and reporting of all findings
- Follow-up options for better tracking of pathological results
- Data review during diagnosis or preliminary reading
- Customized patient letters
- Generates audit, statistical, and other reports

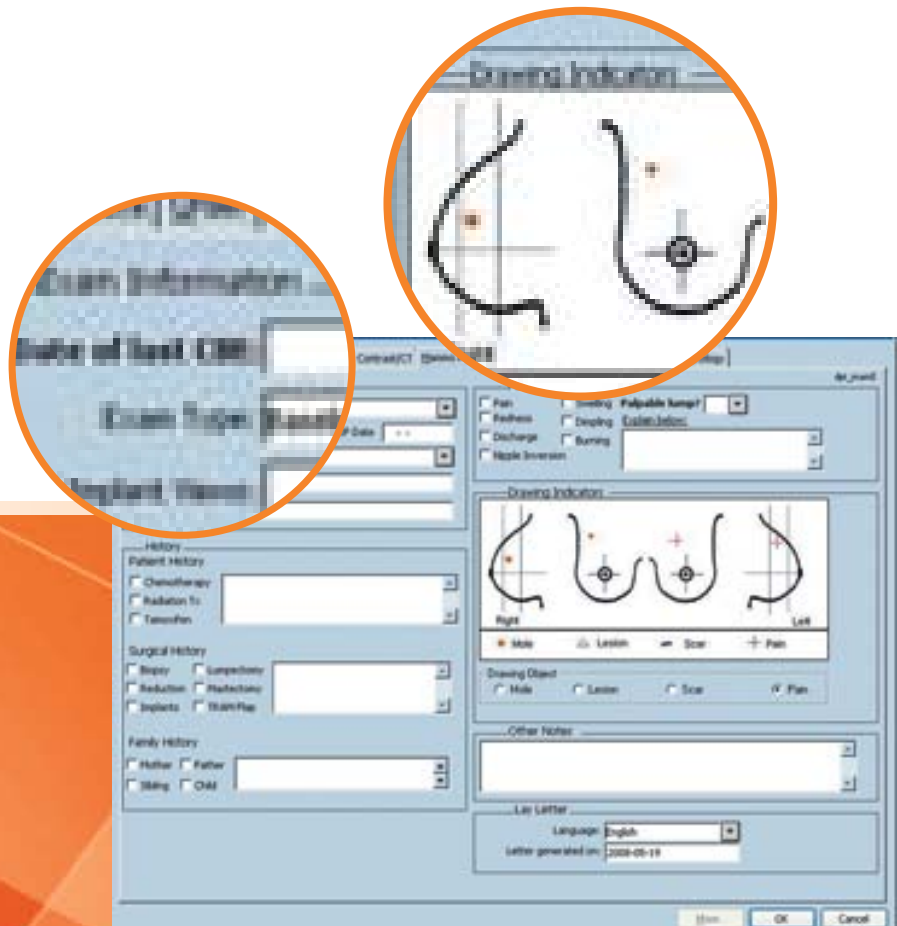
KODAK Mammography Digitizing System

Convert standard, film-based images to digital for easy soft copy comparison of priors with current digital mammograms.

Mammography films can be digitized then sent to DICOM format to any PAC system and viewed as priors on a workstation. Digitized images can be manipulated in a mammography PACS, just like an original digital study.

Key Features:

- Track and display records in DICOM format
- Five different workflow configurations for specific needs
- User-friendly system design is easy to learn and operate
- Accommodates up to 12 films of mixed sizes
- Automatically retrieves patient information from existing RIS systems



VIEW

Carestream PACS For Mammography Solutions

For breast clinics, imaging centers, hospitals, and multi-site enterprises

This versatile IHE compliant PACS supports both screening and diagnostic workflow, and integrates easily with most mammography modalities. Scalable and configurable, CARESTREAM PACS is a perfect mammography solution readily tailored to streamline workflow in your facility – regardless of your facility's size, exam volume or workflow demands.

These PACS mammography solutions are available as upgrades to the CARESTREAM PACS or as a standalone workstation that can be integrated with other vendors' PACS.

The CARESTREAM Mammography Workstation is specifically designed to view and store mammography images and data. This versatile workstation can display images and data from a full range of modalities including FFDM, CR, US, MR, DR, NM, and PET – as well as digitized film images.

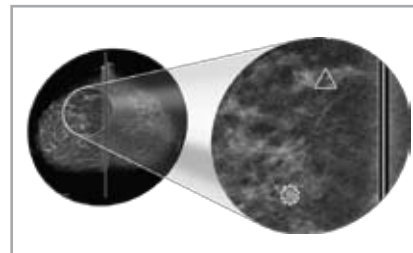
Further mammography features include dedicated diagnostic workstations, advanced digital display support, CAD and an advanced hand controller for screening.

Key Features:

- Supports all breast imaging modalities: including FFDM, CR, MRI and Ultrasound-- from a wide range of vendors.
- User-configurable advanced mammography hanging protocols, configurable at user, group and system level.
- Open architecture
- IHE compliant

KODAK Digital Mammography CAD System* (Works in progress)

In conjunction with the KODAK DirectView CR Mammography Feature, this system is intended to assist cancer detection in screening and diagnostic mammograms. Apply CAD to images from multiple modalities and send results to multiple DICOM destinations.



*Not currently available in the US



PRINT

DryView laser imaging from Carestream Health - the world's best-selling family of laser imagers.

CARESTREAM DryView 5850 Laser Imager

This tabletop laser imager delivers on-demand mammography printing at 580 ppi resolution from multiple modalities, including CR and FFDM. The DryView 5850 accommodates five film sizes -- including 8 x 10 (20 x 25 cm) and 10 x 12 (25 x 30 cm) -- and provides the superb image quality needed for mammography imaging. This laser imager is ideal for imaging centers, departments and small clinics with limited space or unit placement constraints.

KODAK DryView 6800 Laser Imager

This high performance laser imager features exceptional speed, 650 ppi resolution and printing flexibility for mixed environments. Three film drawers accommodate five film sizes for on-demand printing. Optional five-bin sorter enables easy retrieval of films by modality.

Key Features:

- Ideal for CR to print applications in facilities performing both general radiography and mammography imaging
- Compatible with KODAK DryView DVM or DVM+ Mammography Laser Imaging Film
- Proven true-laser technology

DryView 5850
Laser Imager



DryView 6800
Laser Imager



ARCHIVE

Your choice of mammography storage solutions

Readily tailored to meet the unique demands of your mammography facility, Carestream Health offers a choice of onsite and hosted offsite archiving solutions.

The Clinical Data Archive is a vendor neutral enterprise archive for both DICOM and non-DICOM data. It provides a seamless integration with local workflow, immediate on-demand access from anywhere, with business continuity and data protection flexibility.

eHealth Managed Services is a hosted archive and disaster recovery solution. This service is managed by Carestream Health so you never have to worry about IT resources or obsolete technology. Your data is accessible from anywhere and supports a financially smart, pay as you go business model.

If your needs are on a smaller scale, CARESTREAM Shelf Management Archive provides a managed archive solution to store patient information on DVD. An indexed database is maintained so retrieval is quick and efficient. DVD burning can be scheduled to automate the process.

Take it to go

Create CDs or DVDs the patient can take with them using CARESTREAM CD Direct. An integrated viewer is installed directly on the disk, so images can be viewed from any PC.



Count on Carestream Health

Carestream Health has more than 100 years of experience and thousands of successful mammography installations worldwide. Our long tradition of excellence in meeting the needs of mammography professionals continues today with an ongoing commitment to research and development.

An undisputed leader in image science, and a DICOM market leader, Carestream Health actively participates in IHE and other standards boards to improve the quality and utility of medical images and information.



<http://mammo.carestreamhealth.com>

More Information

To learn more about digital mammography solutions, contact your local Carestream Health representative or authorized dealer.



Carestream Health, Inc.
150 Verona Street
Rochester, NY 14608
U.S.A.

Carestream