

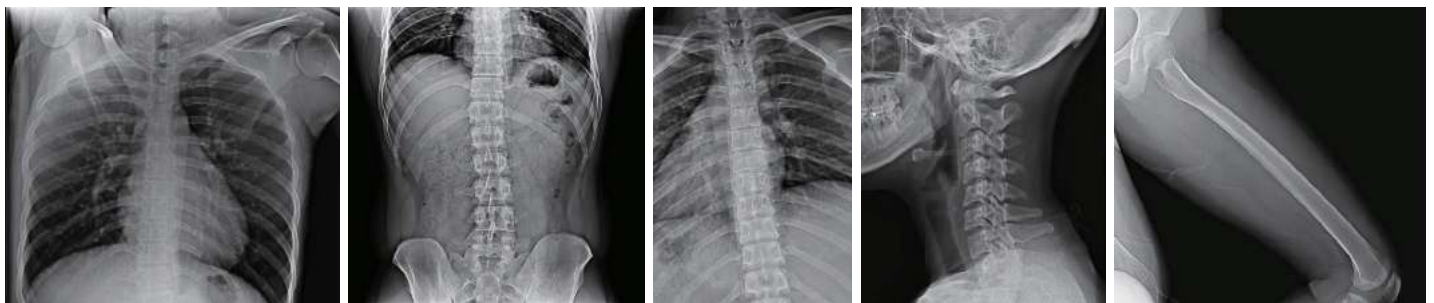
# LG Digital X-ray Detector



17HK700G-W | 14HK701G-W

## Superior Image Quality for Diagnostic Confidence

Highly sensitive Csl AED\* detector with 16bit AD conversion (data input & output) \*Auto Exposure Detection



## Light yet Durable

IP41: Water resistance & dustproof



**Solids level 4**  
Protected against objects of size 1 mm or larger



**Liquids level 1**  
Protected against dripping liquids, such as blood and bodily fluids

Magnesium & carbon-fiber body

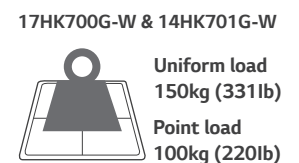


With a super strong body that combines carbon-fiber with magnesium, The LG DXD is not only lightweight, but also exceptionally strong.

Product weight



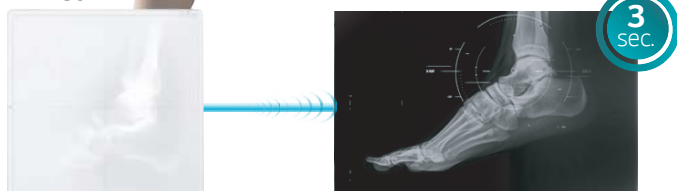
Maximum load weight



## Rapid Image Availability Increases Productivity

3sec. (wired)/ 6sec. (wireless, 802.11 ac)

Wired



(17HK700G-W, 14HK701G-W)

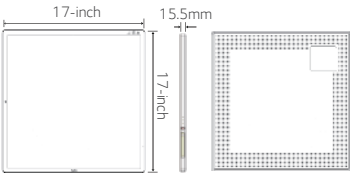
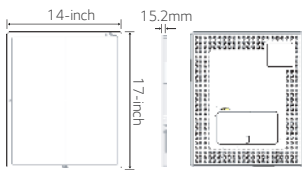
Wireless



(14HK701G-W Only)



## Specification

Model Name		17HK700G-W (Wired)	14HK701G-W (Wired / Wireless)
External Dimension / Weight		17 x 17 inch 	14 x 17 inch 
		3.2kg, 7lb	2.95kg, 6.5lb (Icld. Battery)
Purpose		General Radiography	
Scintillator		CsI	
Pixel Size		140 $\mu$ m	
Image Area	X-ray Sensitive Pixel	3072 x 3072 pixels	2500 x 3052 pixels
	X-ray Sensitive Area	430.08 x 430.08 mm	350 x 427.28 mm
MTF	MTF @ 0.5lp/mm	(Typ.) 89%	
DQE	DQE @ 0.1lp/mm	(Typ.) 72%	
A/D Conversion		16bit	
Data Output		16bit	
Communication	Type	Wired	Wired / Wireless
	Wireless	-	IEEE802.11a/b/g/n/ac, 2.4GHz / 5GHz
	AED (Auto Exposure Detection)	Support	
Cycle Time		8sec.	8sec. (Wired) / 11sec. (Wireless)
Full Image		3sec.	3sec. (Wired) / 6sec. (Wireless)
Durability	Maximum Load Weight	Full (Uniform Load) : 150kg, 331lb Local (Point Load) : 100kg, 220lb	
	Resistance Rating	IP41	
	Sensor Protection Plate	Carbon Fiber Plate	
Battery	Type	-	Detachable
	Operating Time	-	(Typ.) 1636 shots / 5hrs. (@ Cycle Time 11sec.)
	Duration in Standby Status	-	(Typ.) 220 shots / 5.5hrs. (@ Cycle Time 90sec.)
	Charging Time	-	(Typ.) 15hrs.
		-	3hrs.