

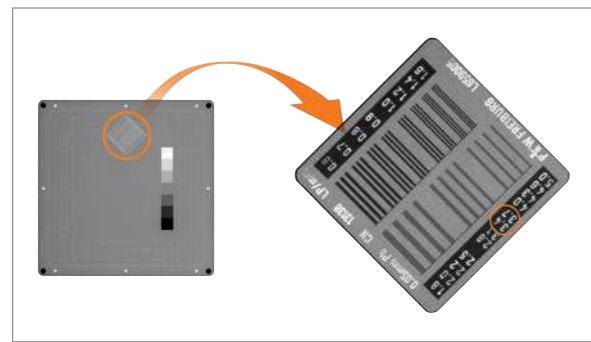
Specification

High Frequency X-ray Generator

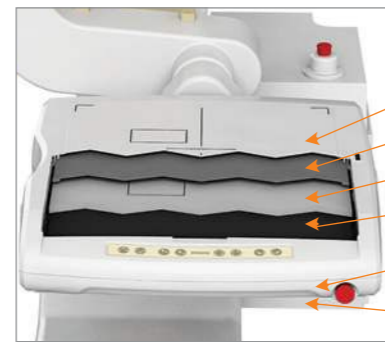
System Model	DIAMOND-5A	DIAMOND-6A	DIAMOND-8A
Model	GXR-52	GXR-68	GXR-82
Output Rating	52kW	68kW	82kW

Outstanding Image Quality

Digital radiography via flat panel detector improves your workflow, exam speed and comfort with efficiency. Digital flat panel detector with CsI screen provides excellent spatial resolution, MTF, DQE and stability based on fine pixel pitch. A 3-field ion-chamber is provided for AEC function.



(Spatial Resolution Chart : PTW Normi-13)



Digital Detector Assembly

- Front Cover
- Removable Grid
- AEC Ion Chamber
- Digital Flat Panel Detector
- Detector Case (Aluminum Casting)
- Spare Grid Holder



Removable High Resolution Grids

- Two removable grids : SID 100/180cm (40/72 inch)
- Auto sensing of focal distance with grid insertion
- Software alert for mismatch in range of grid's focal distance and SID
- Each removable grid is protected by an aluminum frame with handle



DRGEM Customer Service Center

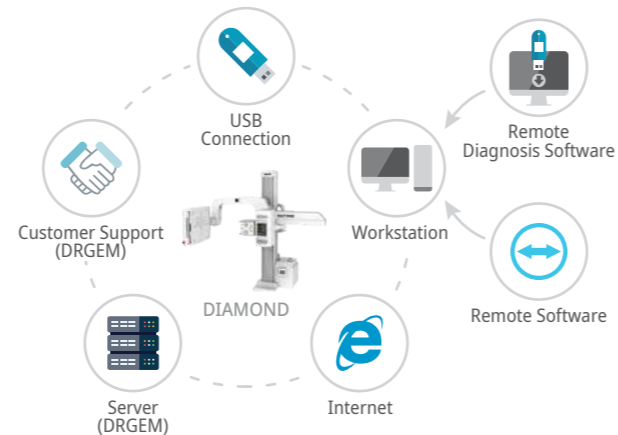
• 24/7 Support

DRGEM's Customer Service team is available 24/7, 365 days a year* via e-mail or Skype to support clients whenever they need.

• Remote Diagnosis

Remote diagnosis can help minimize downtime by quickly finding the cause of errors and detecting potential issues before problems occur.

*May vary by country.



©DRGEM Corporation - All rights reserved. Reproduction in whole or in part is prohibited without the written consent of the copyright-holder. Specifications and features are subject to change without notice. All changes will be in compliance with regulations governing manufacture of medical equipment.

DIAMOND DR System

High Performance and Reliability

Fully Automatic Operation

The DIAMOND DR System is a fully automatic digital radiography system providing state-of-the-art image quality, image processing, and user interface. With a wide selection of anatomical studies on the imaging software, DIAMOND automatically sets up the x-ray generator's preprogrammed exposure technique settings, motorized radiographic stand positioning, x-ray collimation, and post-image processing for the selected study. Specifically designed to increase workflow, this fully digital system offers convenient auto-positioning and advanced image processing to achieve greater performance with minimal effort.

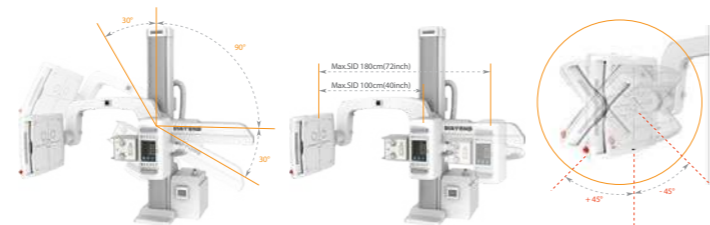
Features

Automatic Collimation

- Automatic x-ray field size control of the motorized collimator corresponds to different SIDs. Includes user adjustable lamp timer with on/off switch.

Automatic Positioning

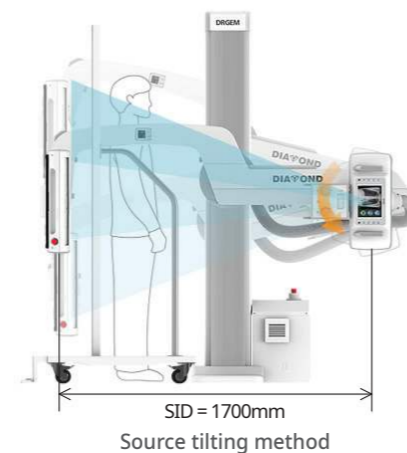
- DIAMOND is a fully-automatic diagnostic system with motorized movement and pre-programmed data for automatic positioning that can be easily reprogrammed by the operator.



- Seven safety sensors have been integrated into the DIAMOND system to protect patients from accidental collision.

Automatic Stitching

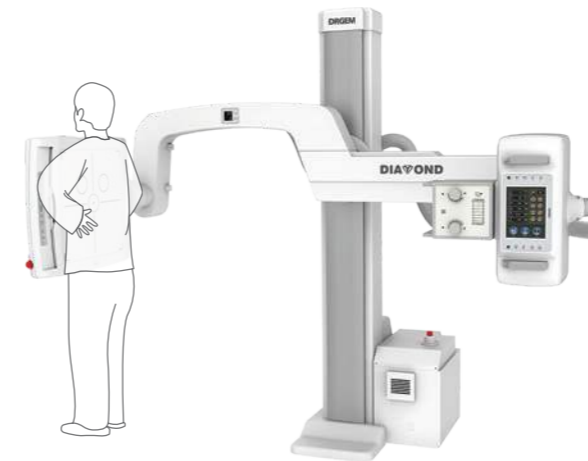
- DIAMOND provides outstanding automatic stitching function via source tilting for creating one long composite image.



DIAMOND Positioning Guide

DIAMOND's U-arm rotation ranges from +120° to +30° with SID movements from 100cm to 180cm. The mobile patient table can also be used to take patient images in a variety of positions, for a total of over 15 different positions. With effortless, fully-motorized positioning using the user-friendly touch console or remote control, DIAMOND is a truly versatile distal system.

Chest PA



Skull Towne's



Abdomen Supine



Hand AP



C-T Spine Swimmers



Abdomen Decubitus

